



REVISION 5

CERTIFICATE No.  
IECEX SIM 11.0003

## 60 SERIES LASER LD 60 IS

In response to  
market demand!!



Operates  
To  
300 metres!!

**NOW  
IEC APPROVED**

### INTRINSICALLY SAFE

Explosion-proof containment not required.  
Works in Methane / Air mixtures

### IEC 60079.0:2004 Edition 4

Electrical apparatus for explosive gas atmospheres.  
Part 0: General Requirements

### APPLICATIONS

- Mining
- Tunnelling
- Industrial
- Safety
- Manufacturing
- Power Boring

### IEC 60079.11:2006 Edition 5

Electrical apparatus for explosive gas atmospheres.  
Part 11: Equipment protection by Intrinsic safety "i"

The **LD 60 IS** laser allows accurate construction and alignment of tunnels where being driven by tunnel boring machines, drill and blast, pipe jack or conventional techniques.

The **LD 60 IS** is intrinsically safe and therefore does not require an explosion proof containment when working in gaseous environments such as methane / air mixtures.

The unit is waterproof, **IP55**, rugged and entirely constructed of stainless steel and brass.

The Laser is based on diode technology and powered through 4 x 'D' Cell batteries.

The replacement of Batteries in the Hazardous Area is controlled by an Allen Headed Grub Screw.

### OPTIONS

Rubber Bumpers (Anti Static)   SISA.60.001  
Metal Carry Case                See rear page.  
Penta Prism                         A 90 Deg

### SPECIFICATIONS

Length	455mm
Diameter	60mm
Weight	3.7 kg with batteries
Power supply	4 x 'D' Cell batteries (SISLD60D)
Operating time	300 hours
Class	2M
Output power	3 mW
Operating range	300 m
Beam diameter (at exit)	10 mm



**STOTT INDUSTRIAL SUPPLIES**  
Unit 1 / Balook Drive  
(Endeavour Close)  
BERESFIELD NSW 2322

3/12 REV5

[www.stottind.com.au](http://www.stottind.com.au)

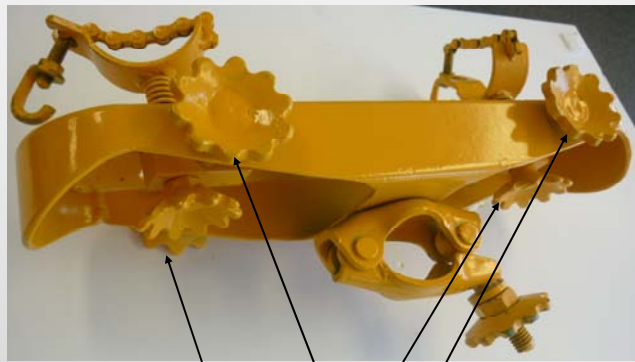
**This Laser Manufactured in Australia by  
MCE LASERS Melbourne**

PHONE: 02 4966 8020  
FAX: 02 4966 8302  
ABN: 70 114 974 784

## NEW & IMPROVED

*The following changes have been incorporated into this new Laser Adjustment bracket following customer input.*

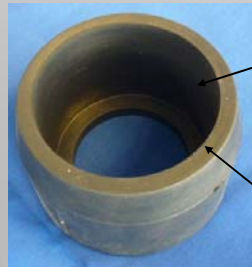
- Larger thumb wheels and new simple Laser clamping mechanisms for effortless adjustment with gloved hands
- Heavier Duty threaded rods
- Threads and slides now have better protection from debris.
- Laser Clamp chain remains attached to the frame.
- Frame ends are smooth & rounded to reduce possible injury & protect the slides.
- Lighter & Stronger construction.
- Rounded frame ends also serve as a Carry Handle designed for comfortable grip for



### LASER ADJUSTMENT BRACKET

Adjustments are provided at both front and back for left / right movement & up / down movement

P/No: **SISLD60IS-BRKT**



### RUBBER BUMPERS

To reduce damage risk

P/No: **SISA.60.001**

### HORIZONTAL HANGER

Standard 600mm long  
(no threaded nut at end)

P/No: **CLA11LF03**

Also Available:

- Various optional lengths
- Nut can be included at open end

### VERTICAL HANGER

Standard 600mm long

P/No: **CLA11LF02B**

Also available:

- Various optional lengths



### STAINLESS STEEL CARRY CASE

Stainless Steel Tube with Handle, Chain and Pin Latched End Cover plate

P/No: **SISLD60HARDCASE**

Threads at both ends (M24) to facilitate connection to Roof Bolts

**If your application needs special modifications, talk with us at Stotts about how we can assist you.**